

# SIRENA 68 ML



5.9 M

21.4M



**CHARTER - INTERNATIONAL**

Phone Whatsapp :009607774091  
Hello@charter-international.com  
Maldives and USA



## TECHNICAL & FACTSHEET

BUILDER : Cor. D. Rover Design Studio

---

YEAR /REFIT : 2022

---

LENGHT : 21.4M

---

BEAM : 5.9M

---

CABINS : TOTAL 03 CABIN ( 2 double 1 twin cabin )

---

GUEST : SLEEP 6 PAX DAY CRUISE OR TRANSFER : 20 PAX

---

SPEED : MAX 28 KNTS. CRUISE SPEED 16 KNTS

---

## WHY YOU CHOOSE US? DIRECT OWNER

The goal of the Sirena 68 hull design was to offer efficiency at speeds ranging from long-range cruising to planning. A slippery hull with minimal appendage drag gave the range numbers we were looking for, while optional power choices increased the top end. Fast and stabilized

BEST FOR CHARTER, DAY CRUISE

ENGINE : 2 X Catapiller

---

TENDER : 3M FAST OURBOARD ENGINE

---

CREW : 4

---

## TOYS ON DEMAND ( ON REQUEST)

1 x Tendar

1 x Kayaks

1 X Seabob ( on request)

1 x Set Water Ski

1 x Set Knee-Boarding

1 x Set Wake-Boarding

Masks, Snorkels & Fins, Balloons Weights

Big game fishing

Large reef fishing



CHARTER - INTERNATIONAL



CHARTER - INTERNATIONAL





QUARTER - INTERNATIONAL





CHARTER - INTERNATIONAL









CHARTER - INTERNATIONAL















CHARTER - INTERNATIONAL





CHARTER - INTERNATIONAL





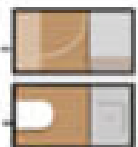
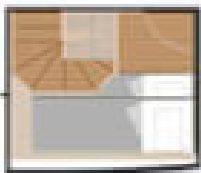
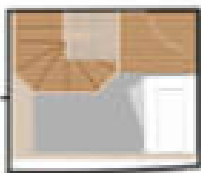
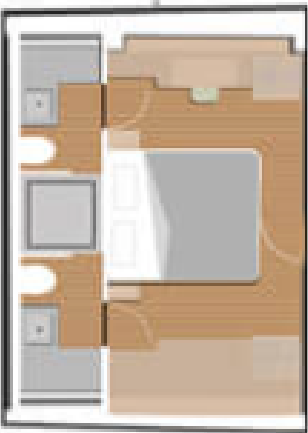
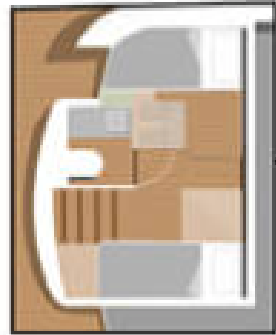
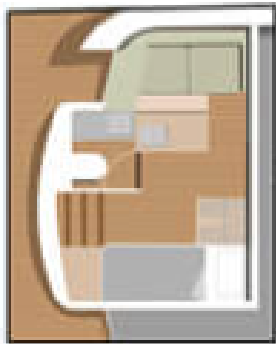




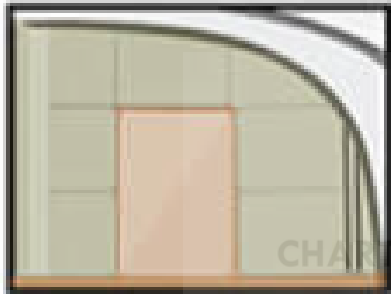
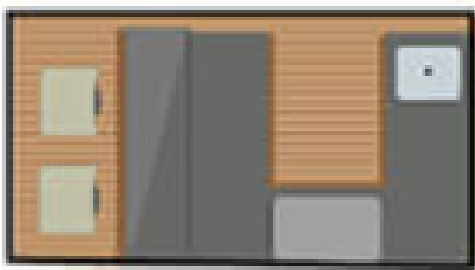
CHARTER INTERNATIONAL



# LAYOUT







CHARTER - INTERNATIONAL





CHARTER - INTERNATIONAL









CHARTER - INTERNATIONAL





CHARTER - INTERNATIONAL





CHARTER - INTERNATIONAL





CHARTER INTERNATIONAL





CHARTER - INTERNATIONAL





CHARTER - INTERNATIONAL





CHARTER - INTERNATIONAL